

COULMAN ISLAND QUADRANGLE (VICTORIA LAND)

G. Capponi, M. Maccheri & G. Oggiano
R. Casnedi, L. Cristini, G. Klein-schmidt, A. Montanari, P.C. Pertusati, N.W. Roland, F. Salvini, M. Schmidt-Thoma, F. Tassinari

EXPLANATION

CENOZOIC MAGMATISM AT THE ROSS SEA MARGIN

McMURDO IGNEOUS COMPLEX
MALLETT BASALT TO TRACHYBASALT (M)
MULTI-PERALKALINE TRACHYTE AND RHYOLITE (MTR)

POST-ROSS MAGMATISM AND SEDIMENTATION

ADMIRALTY IGNEOUS SUITE (A)
ADMIRALTY GRANODIORITE SUITE (Ag)

TERRANES AND UNITS OF THE ROSS OROGEN

WILSON TERRANE
GRANITE HARBOUR IGNEOUS COMPLEX
GRANITE HARBOUR GRANODIORITE AND GRANITE (G)
GRANITE HARBOUR TONALITE (GTR)

WILSON METAMORPHIC COMPLEX

MIDAMITI GNEISS (M)
Desert metamorphic rocks with minor gneisses, hornfelsite gneisses, amphibolite layers and calc-silicate horizons.

DESSENT METAFEDERARY SUITE (D)

TIGER GABBRO (T)
BLACK SPIDER GNEISS (BS)

BOWERS SUPERGROUP

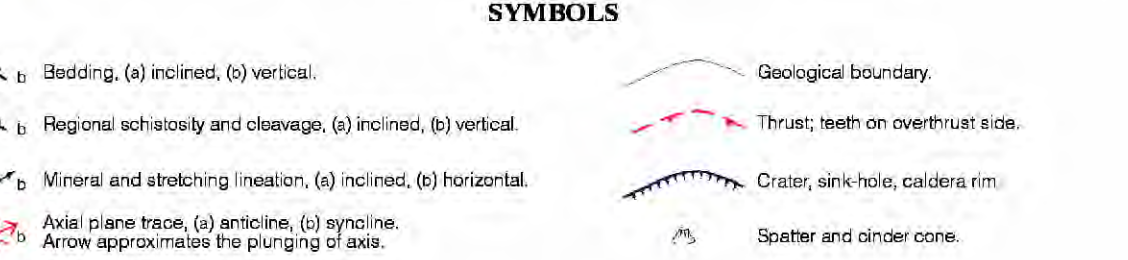
LEAP YEAR GROUP (LY)
Hallett Basalt to Trachybasalt

SLIDERS GROUP

MOAR FORMATION (M)
GLASGOW BRILITE VOLCANIC BRECCIA AND TUFF (B)

ROBERTSON BAY GROUP (RB)

ROBERTSON BAY GROUP (RB)



TECTONIC SKETCH MAP OF NORTHERN VICTORIA LAND



TOPOGRAPHIC BASE
U.S. GEOLOGICAL SURVEY MAPS AND AERIAL PHOTOGRAMMETRIC RECONSTRUCTION SERIES

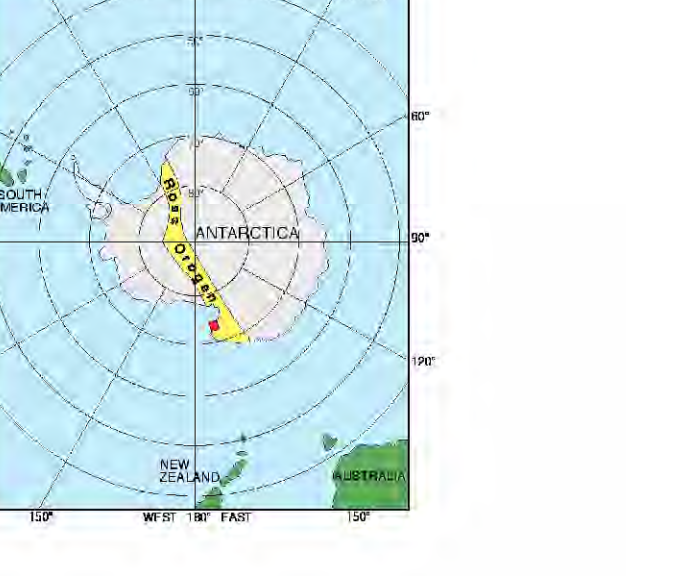


TOPOGRAPHIC BASE
U.S. GEOLOGICAL SURVEY MAPS AND AERIAL PHOTOGRAMMETRIC RECONSTRUCTION SERIES

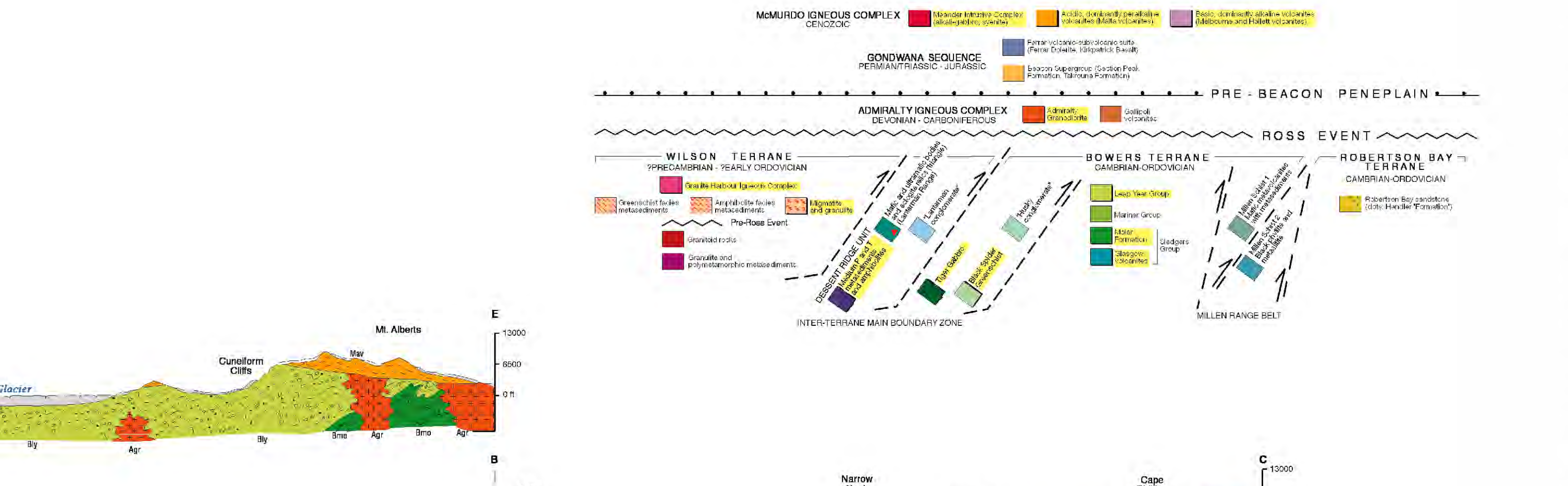
INDEX TO ADJOINING SHEETS



LOCATION DIAGRAM



SYNOPTIC TABLE OF STRATIGRAPHIC AND TECTONIC RELATIONSHIPS IN NORTHERN VICTORIA LAND



1. Dipartimento di Scienze della Terra, Università di Genova, Corso Europa, 26 - 16132 Genova, Italy
2. Dipartimento di Scienze della Terra, Università di Pisa, Via S. Annunziata, 4 - 56126 Pisa, Italy

1. Dipartimento di Scienze della Terra, Università di Genova, Corso Europa, 26 - 16132 Genova, Italy
2. Dipartimento di Scienze della Terra, Università di Pisa, Via S. Annunziata, 4 - 56126 Pisa, Italy

PREVIOUS WORK

This region was visited in the 1950s by several New Zealand field parties which allowed recognition of the overall framework of regional geology (see Cairns et al., 1985; and Taylor & Taylor, 1977 for a detailed account of the geology and petrology of the rocks exposed on the Ross Sea coast of the 1950-52 season).

LITHOSTRATIGRAPHY

Wilson Terrane Metamorphic rocks They form the eastern outlier of the Wilson Terrane, which includes the Ross Sea Group, and includes the Wilson Terrane and the Ross Sea Group.

Black Spider Gneiss This gneiss is a narrow belt along the SW border of the BT. From Mount G. to the coast, major outcrops are at the type locality (Black Spider Ridge).

Bowers Supergroup The rocks of the supergroup show very low to low metamorphic grades. The group is composed by the Bowers Supergroup and the Wilson Terrane.

Robertson Bay Terrane The Robertson Bay Group is a narrow belt along the SW border of the BT. From Mount G. to the coast, major outcrops are at the type locality (Black Spider Ridge).

McMurdo Igneous Complex The McMurdo Igneous Complex is a large igneous province located on the Ross Sea coast of the 1950-52 season. It includes the Ross Sea Group and the Wilson Terrane.

Wilson Terrane The Wilson Terrane is a large tectonic province located on the Ross Sea coast of the 1950-52 season. It includes the Ross Sea Group and the Wilson Terrane.

Descent Ridge Unit The Descent Ridge Unit is a narrow belt along the SW border of the BT. From Mount G. to the coast, major outcrops are at the type locality (Black Spider Ridge).

Bowers Supergroup The Bowers Supergroup is a large igneous province located on the Ross Sea coast of the 1950-52 season. It includes the Ross Sea Group and the Wilson Terrane.

Wilson Terrane The Wilson Terrane is a large tectonic province located on the Ross Sea coast of the 1950-52 season. It includes the Ross Sea Group and the Wilson Terrane.

Descent Ridge Unit The Descent Ridge Unit is a narrow belt along the SW border of the BT. From Mount G. to the coast, major outcrops are at the type locality (Black Spider Ridge).

Bowers Supergroup The Bowers Supergroup is a large igneous province located on the Ross Sea coast of the 1950-52 season. It includes the Ross Sea Group and the Wilson Terrane.

Wilson Terrane The Wilson Terrane is a large tectonic province located on the Ross Sea coast of the 1950-52 season. It includes the Ross Sea Group and the Wilson Terrane.

Descent Ridge Unit The Descent Ridge Unit is a narrow belt along the SW border of the BT. From Mount G. to the coast, major outcrops are at the type locality (Black Spider Ridge).

Bowers Supergroup The Bowers Supergroup is a large igneous province located on the Ross Sea coast of the 1950-52 season. It includes the Ross Sea Group and the Wilson Terrane.

Wilson Terrane The Wilson Terrane is a large tectonic province located on the Ross Sea coast of the 1950-52 season. It includes the Ross Sea Group and the Wilson Terrane.

Descent Ridge Unit The Descent Ridge Unit is a narrow belt along the SW border of the BT. From Mount G. to the coast, major outcrops are at the type locality (Black Spider Ridge).

Bowers Supergroup The Bowers Supergroup is a large igneous province located on the Ross Sea coast of the 1950-52 season. It includes the Ross Sea Group and the Wilson Terrane.

Wilson Terrane The Wilson Terrane is a large tectonic province located on the Ross Sea coast of the 1950-52 season. It includes the Ross Sea Group and the Wilson Terrane.